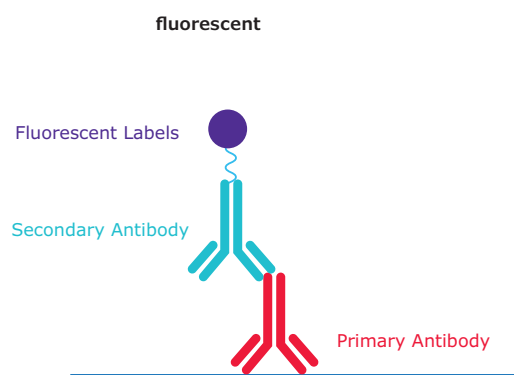
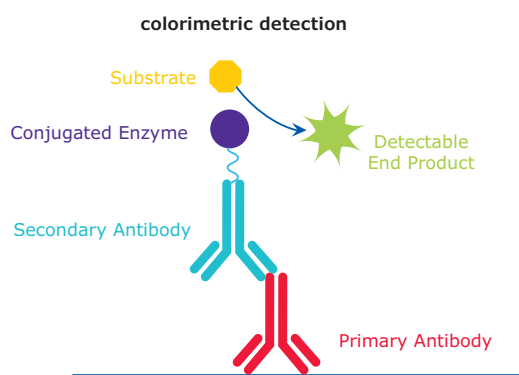


DISCOVER

Our Secondary Antibody World

We offer secondary antibodies from a variety of host species.

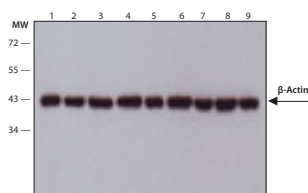
- Explore our highly cited secondary antibodies covering your ELISA, western blot, immunohistochemistry, or other assay needs.
- Conjugated secondary antibodies are produced in a variety of host animals making them compatible with a broad range of immunochemical reagents.
- The most common detection system for these antibodies are colorimetric or fluorescent.
- Conjugated antibodies utilize enzymes such as horseradish peroxidase and alkaline phosphatase for colorimetric detection.
- Conjugated antibodies are also linked to a variety of fluorescent labels including fluorescein isothiocyanate (FITC), tetramethylrhodamine isothiocyanate (TRITC), cyanine (Cy3), or phycoerythrin (R-PE).



We offer a large portfolio of conjugated antibodies.

We offer reliable conjugated secondary antibodies linked to a variety of colorimetric and fluorescent labels for use in detection, purification, sorting, and microscopy applications.

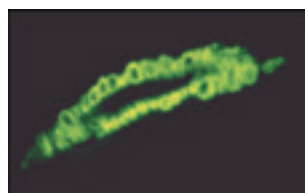
Detection



Immunoblotting

Cell line lysates were separated on SDS-PAGE and probed with 1:5,000 Monoclonal Anti-β-Actin Clone: AC-15 (Cat. No. A5441). Primary antibody was developed using Goat Anti-Mouse IgG-Peroxidase (Cat. No. A2304) and a chemiluminescent substrate.

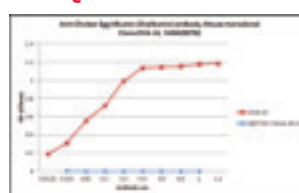
Localization



Immunofluorescence

Formalin-fixed, paraffin-embedded human tongue tissue stained with Anti-α-Smooth Muscle Actin, clone 1A4 (Cat. No. A2547). Primary antibody was developed using Mouse IgG (Fab specific)-FITC (Cat. No. F5262).

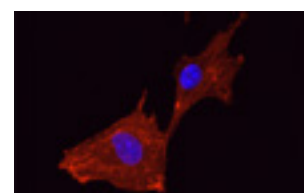
Quantification



ELISA

Anti-Chicken Egg Albumin (Ovalbumin) antibody, Mouse monoclonal, Clone: OVA-14 (Cat. No. SAB4200702) was serially diluted to detect Albumin from chicken egg white (Cat. No. A5503) by indirect ELISA. Primary antibody was developed using Goat Anti-Mouse IgG-Peroxidase (Cat. No. A2304) and OPD substrate.

Localization



Immunofluorescence

Hs68 cells were fixed and permeabilized with methanol followed by acetone. Fixed cells were stained with 5µg/mL Anti-Alpha Actinin antibody, Mouse monoclonal, Clone: BM72.5 (Cat. No. SAB4200813). The antibody was developed using Goat Anti-Mouse IgG, Cy3™ conjugate. Cells were counterstained with DAPI (blue) to stain nuclei.

2 Simple Steps for Choosing the Ideal Secondary Antibody

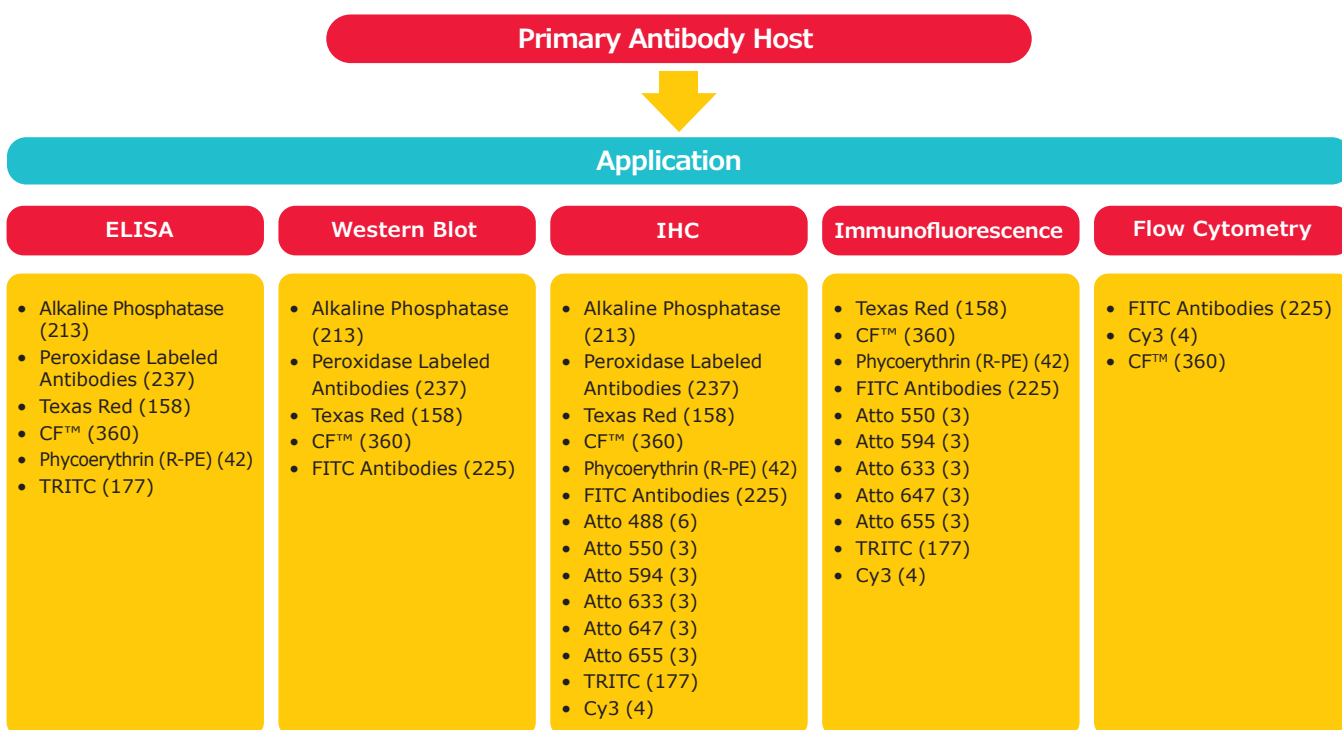
What is your primary antibody species?

Secondary antibodies are directed against the species of the primary antibody. Therefore, you will need a secondary antibody that is raised in a species different than the host species of the primary antibody. For example, if your primary antibody is raised in mouse, you will need an anti-mouse secondary antibody raised in goat, rabbit, etc.

What is your application?

The label is very application dependent. For immunoblotting and ELISA, enzyme-labeled secondary antibodies are the most popular. Peroxidase is economical and a more stable enzyme, in general, than alkaline phosphatase. It has also become very popular for use in chemiluminescent detection systems. Alkaline phosphatase, on the other hand, is considered more sensitive than peroxidase particularly when colorimetric detection is used.

For cell or tissue staining, alkaline phosphatase, peroxidase, or secondary antibodies conjugated to a fluorochrome may be used. Common fluorochromes are FITC, phycoerythrin, CF™ Dyes, Atto Dyes, and Quantum Red. Associated applications are immunocytochemistry/immunofluorescence, flow cytometry, or immunohistochemistry (IHC).



All supported with our **Guaranteed Performance** policy to evaluate our antibodies with complete peace of mind. Learn more at: [SigmaAldrich.com/antibodies](https://www.sigmaaldrich.com/antibodies)

To place an order or receive technical assistance

Order/Customer Service: [SigmaAldrich.com/order](https://www.sigmaaldrich.com/order)
Technical Service: [SigmaAldrich.com/techservice](https://www.sigmaaldrich.com/techservice)
Safety-related Information: [SigmaAldrich.com/safetycenter](https://www.sigmaaldrich.com/safetycenter)

[SigmaAldrich.com](https://www.sigmaaldrich.com)

